

PK 88002 EH



THE POWER LINK PLUS ENABLES OPERATIONS WITHIN CONFINED SPACES



OPERATOR-FRIENDLY PRODUCT DESIGN





- High value retention due to KTL coating
- Additional applications due to Power Link Plus
- Maximum utilisation of the working range due to HPSC
- More lifting power due to E-HPLS



FIRST-RATE IN DESIGN AND PERFORMANCE



CONTINUOUS SLEWING SYSTEM
UNRESTRICTED MOVEMENT

More efficient in operation due to faster loading cycles, since the crane can be slewed over a shorter distance. The crane works more efficiently and faster.



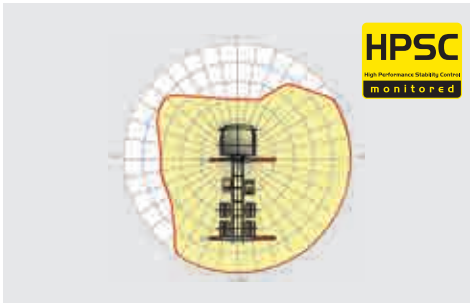
POWER LINK PLUS
HIGH VARIETY OF USES

With the 15-degree reverse linkage system, you can reach through low door openings and also work inside buildings. Heavy crane work – even in difficult conditions.



LOW-MAINTENANCE EXTENSION SYSTEM
REDUCES SERVICE TIME

With sliding elements made of synthetic material and the high-quality KTL coating, this boom system significantly simplifies service performed by the operator. This saves time and money – and protects the environment.



HPSC
MAXIMUM UTILISATION OF THE WORKING RANGE

The variable stabiliser positioning of the High Performance Stability Control System makes it possible to utilise the lifting capacity to the maximum. It enables working within tight spaces.



HIGH SPEED EXTENSION
FOR EFFICIENT ASSIGNMENTS

The High Speed Extension speeds up the extension boom system. Crane works faster and more efficiently.



RADIO REMOTE CONTROL
DIALOGUE WITH THE OPERATOR

PALFINGER radio remote controls are equipped with linear lever or cross lever and provide the greatest possible comfort for the operator. All EH models with LED-Display inform the crane operator about the different operating conditions.



POWER LINK CABLE WINCH
MORE COMFORT IN CABLE WINCH OPERATION

Characterised by low installation height, it is ideal for working inside buildings and transports with the crane boom unfolded. The Comfort Cable Routing reduces set-up times to a minimum.



FUNCTIONAL DESIGN
PRACTICAL AND ATTRACTIVE

Robust plastic covers protect crane parts against dirt and damage. Better appearance and increased operational comfort – during the entire lifetime.



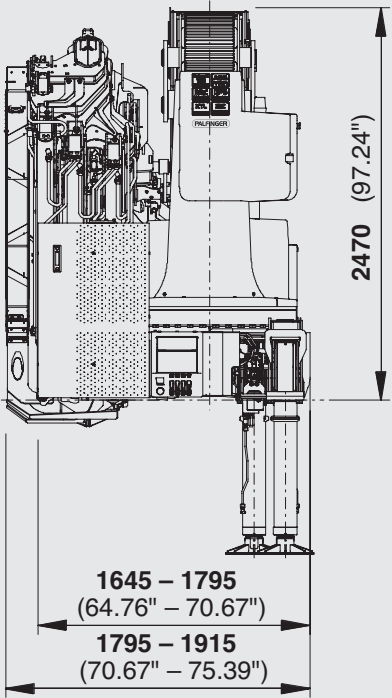
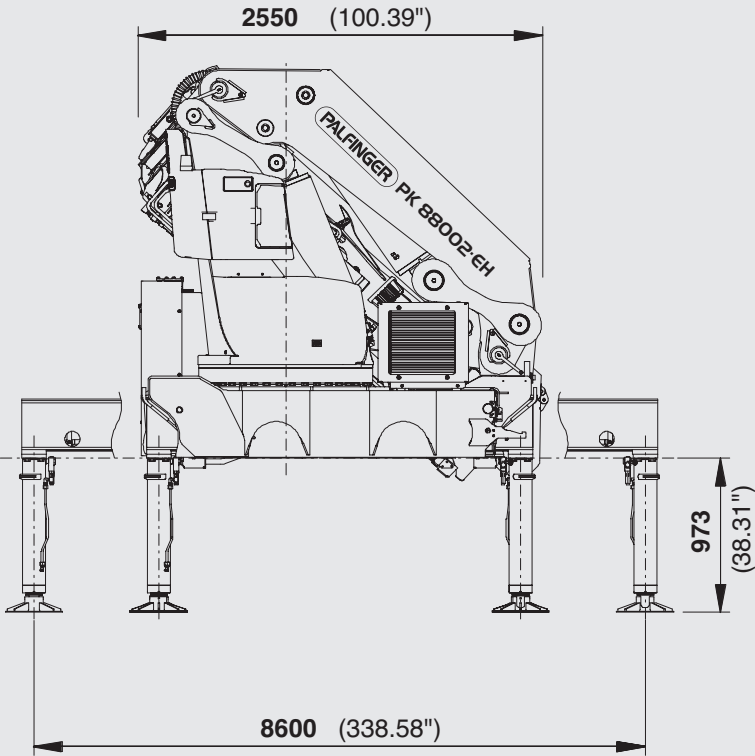
KTL – CATHODIC DIP PAINTING
FOR RETAINING HIGH VALUE

The UV-resistant coating guarantees long-term surface protection. Perfect appearance during the entire lifetime for maximum resale value.

* Optional features / country-specific equipment

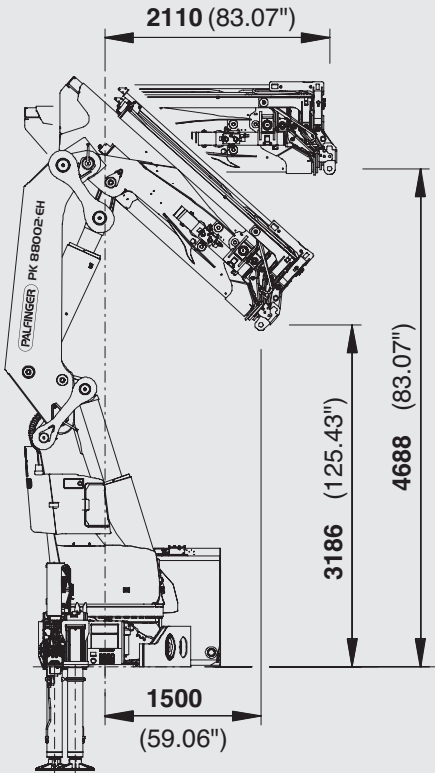


PERFECT DIMENSIONS



TECHNICAL SPECIFICATIONS (EN 12999 HC1 HD4/B3)

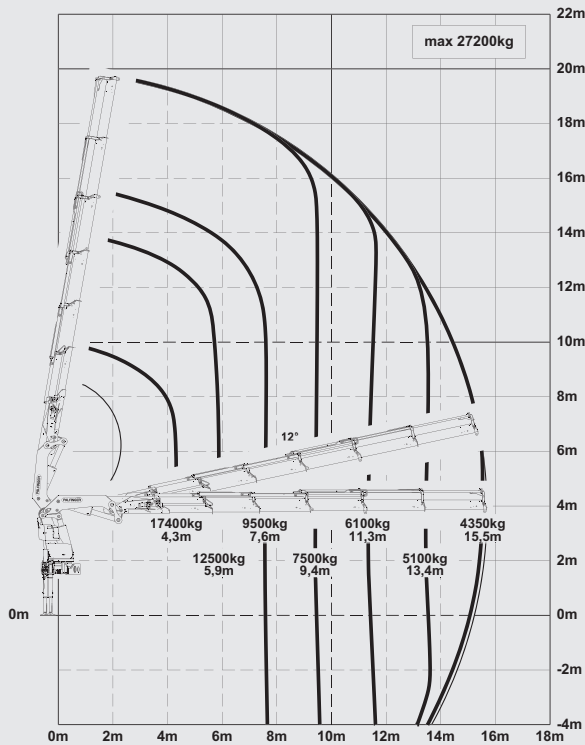
Max. lifting moment	81.6 mt/800.7 kNm	590520 ft.lbs
Max. lifting capacity	30000 kg/294.3 kN	66200 lbs
Max. hydraulic outreach	22.5 m	73' 10"
Max. manual outreach	25.0 m	82' 0"
Max. outreach (with fly-jib)	32.4 m	106' 4"
Slewing angle	endless	
Slewing torque	7.7 mt/76.0 kNm	56050 ft.lbs
Stabiliser spread (std.)	8.6 m	28' 3"
Fitting space required (std.)	min. 1.65 m max. 1.92 m	5' 5" 6' 3"
Width folded	2.55 m	8' 4"
Max. operating pressure	365 bar	5293 psi
Recommended pump capacity	from 110 l/min to 130 l/min	29,1 US gal./min 34,3 US gal./min
Dead weight (std.)	6780 kg	14950 lbs



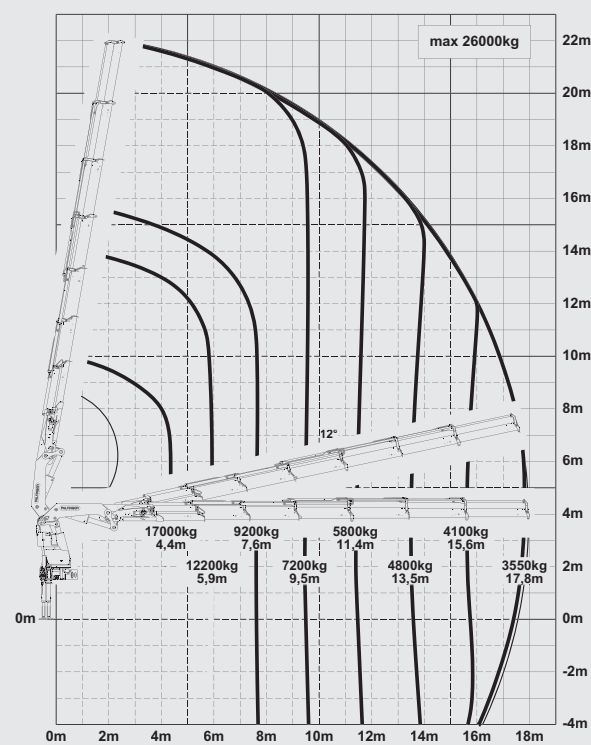
PK 88002 EH

HIGH PERFORMANCE

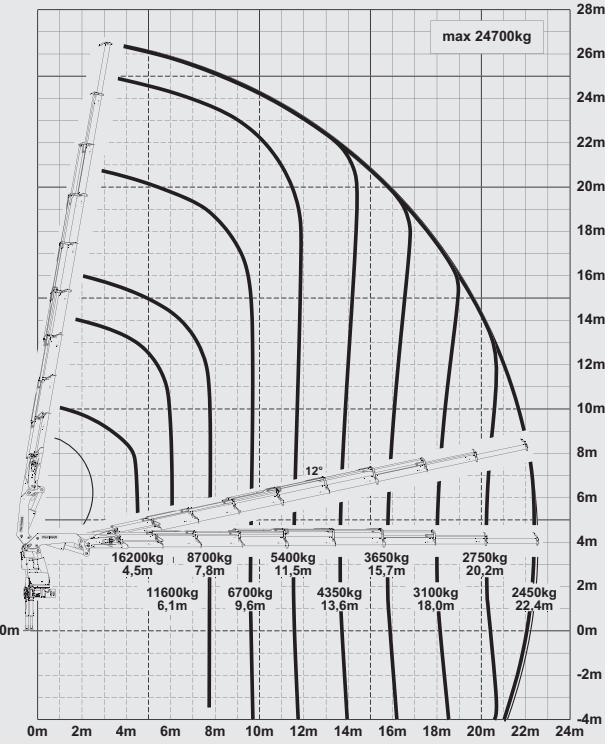
E



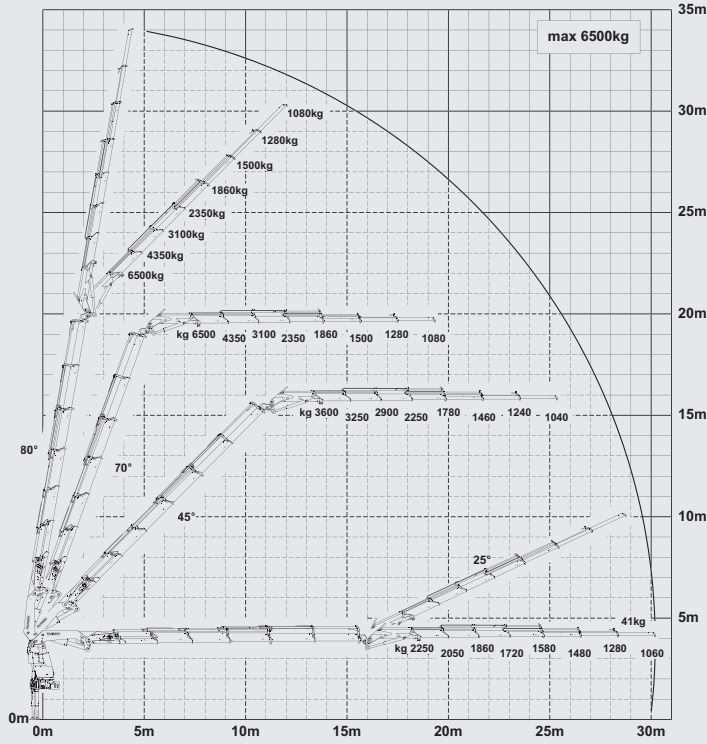
F



H

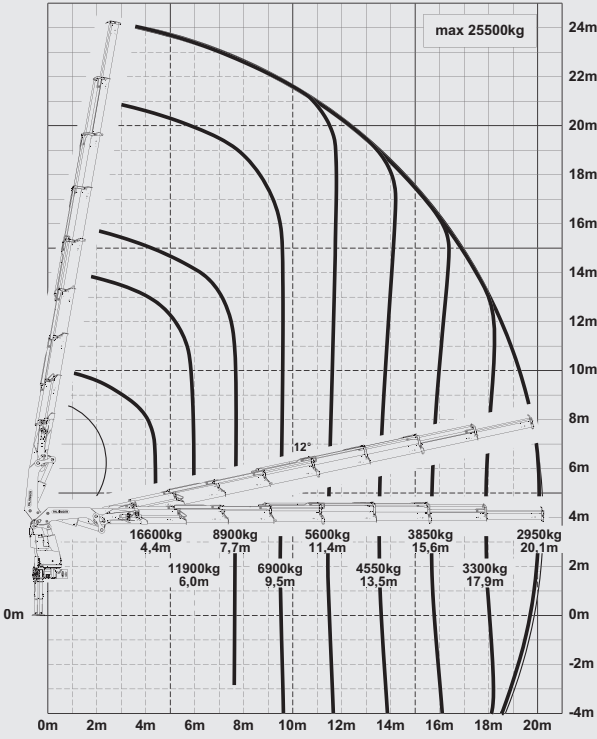


E PJ170E JV1

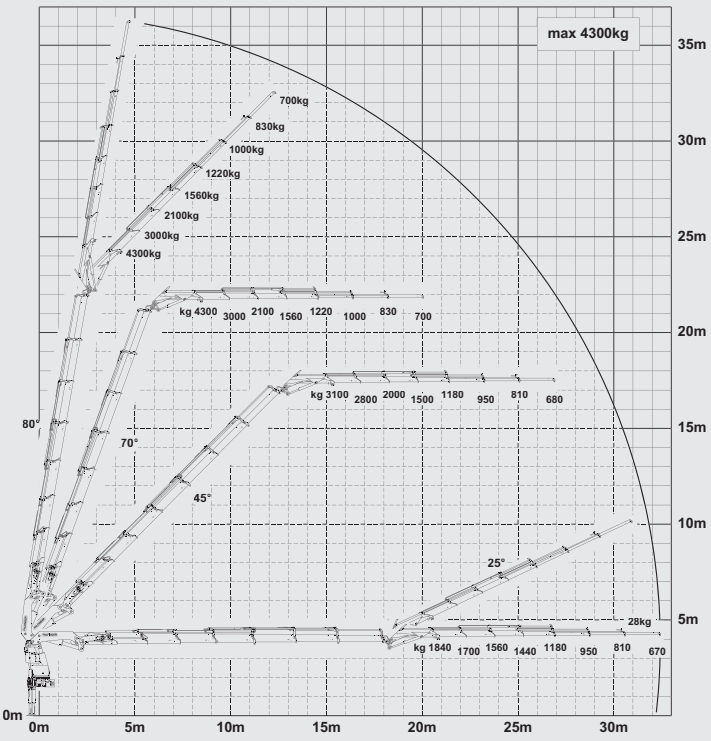


PERFECT FOR HIGH OUTREACHES

G



F PJ125E JV1



LIFTING CAPACITIES

A	max.		30000 kg	66200 lbs
	4.0 m	13 ft	19600 kg	43300 lbs
	5.6 m	18 ft	14300 kg	31600 lbs
	7.3 m	24 ft	11100 kg	24500 lbs
B	max.		29800 kg	65700 lbs
	4.1 m	13 ft	19200 kg	42300 lbs
	5.6 m	18 ft	13900 kg	30700 lbs
	7.3 m	24 ft	10700 kg	23700 lbs
C	max.		29000 kg	64,000 lbs
	4.1 m	14 ft	18600 kg	40,900 lbs
	5.7 m	19 ft	13500 kg	29,600 lbs
	7.4 m	24 ft	10300 kg	22,700 lbs
D	max.		27800 kg	61300 lbs
	4.2 m	14 ft	17900 kg	39500 lbs
	5.8 m	19 ft	13000 kg	28600 lbs
	7.5 m	25 ft	9900 kg	21800 lbs
E	max.		27200 kg	60000 lbs
	4.3 m	14 ft	17400 kg	38200 lbs
	5.9 m	19 ft	12500 kg	27600 lbs
	7.6 m	25 ft	9500 kg	20900 lbs
F	max.		26000 kg	57300 lbs
	4.4 m	14 ft	17000 kg	37400 lbs
	5.9 m	19 ft	12200 kg	26900 lbs
	7.6 m	25 ft	9200 kg	20300 lbs
G	max.		25500 kg	56200 lbs
	4.4 m	14 ft	16600 kg	36700 lbs
	6.0 m	20 ft	11900 kg	26200 lbs
	7.7 m	25 ft	8900 kg	19700 lbs
H	max.		24700 kg	54500 lbs
	4.5 m	15 ft	16200 kg	35600 lbs
	6.1 m	20 ft	11600 kg	25500 lbs
	7.8 m	25 ft	8700 kg	19100 lbs

*mechanical extension

