

PK 150002

Performance

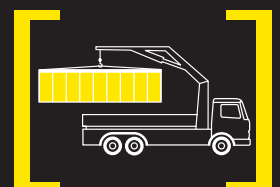
PALFINGER



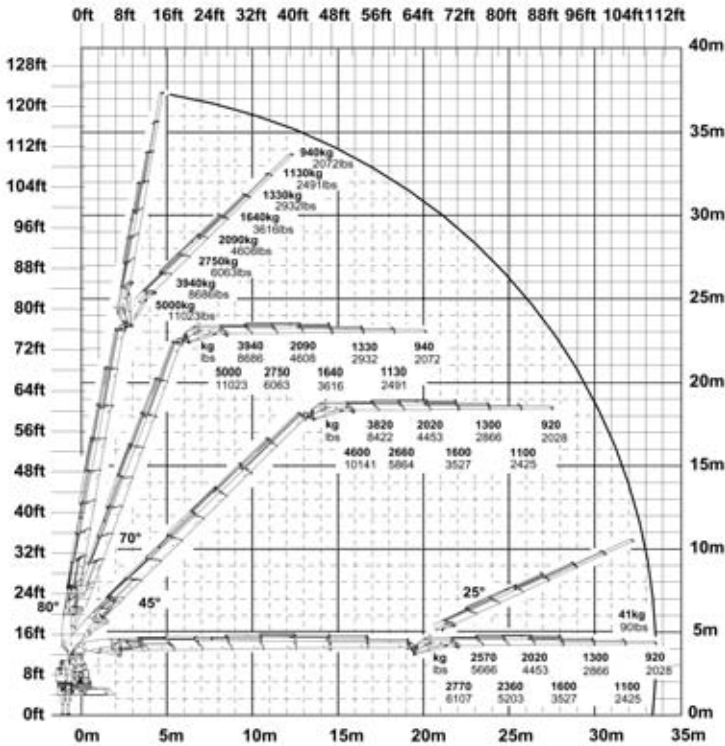
CRANE TECHNOLOGY IN THE EXTRA-SPECIAL CLASS

Right at the top of the heavy-duty crane class, the PK 150002 *Performance* sets completely new standards of quality, outreach and lifting capacity. This high-tech heavy-duty crane masters extreme jobs and maximum loadings just as easily as it handles difficult precision work. Manufactured with first grade class high-strength fine-grained structural steel this crane also impresses with its low dead weight and extraordinary performance.

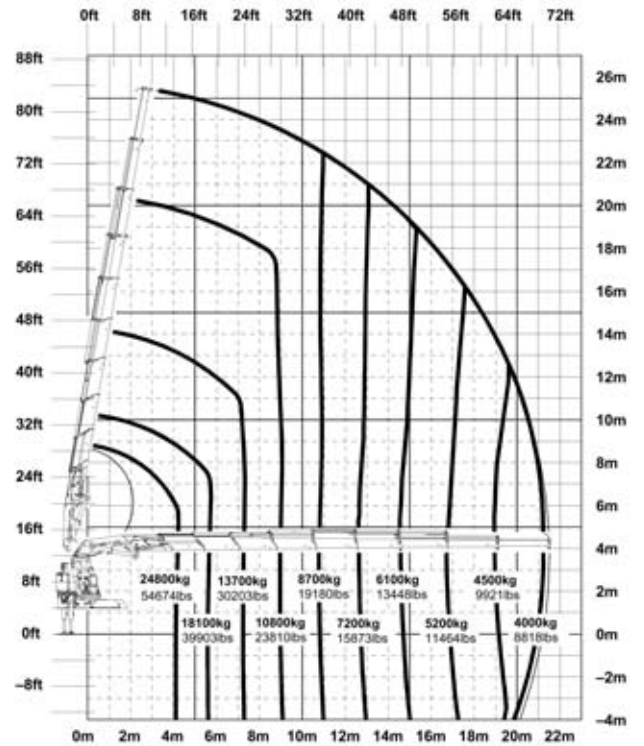
PK 150002 *Performance* - a new milestone in crane engineering from the PALFINGER Company.



PK 150002 Performance G PJ170E

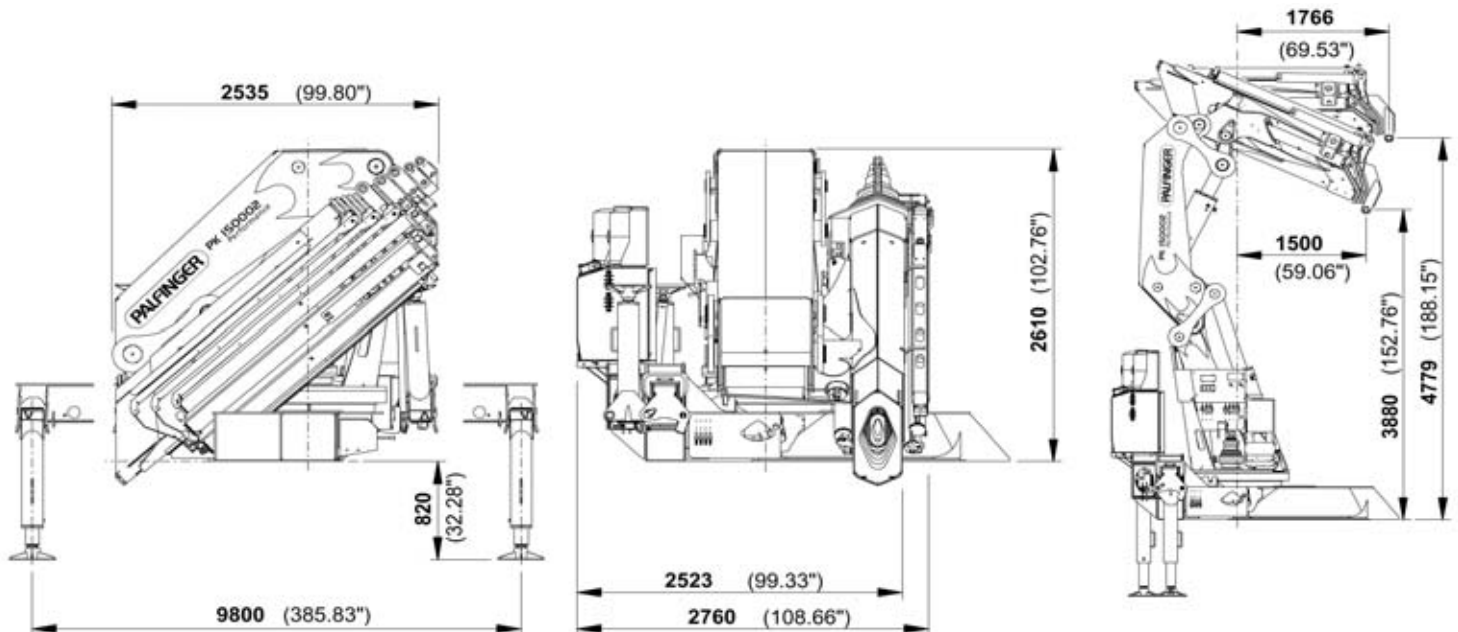


PK 150002 Performance H



PK 150002 Performance		
Technical Specifications (EN 12999 H1-B3)		
Max. lifting moment	116.8 mt/1146.0 kNm	844940 ft.lbs
Max. lifting capacity	40000 kg/392.4 kN	88180 lbs
Max. hydraulic outreach	21.5 m	70' 6"
Max. manual outreach	26.9 m	88' 3"
Max. outreach (with fly-jib)	36.0 m	118' 1"
Slewing angle	endless	

PK 150002 Performance		
Standard crane		
Slewing torque	12.0 mt/118.0 kNm	87000 ft.lbs
Outreach	8.9 m	29' 2"
Stabilizer spread standard	9.8 m	32' 2"
Fitting space required	min. 2.52 m/8' 3"	max. 2.76 m/9'
Width folded	2.55 m	8' 4"
Max. operating pressure	330 bar	4785 psi
Recommended pump capacity with RC- and LS-system	2 x 100 l/min	22.0 imp.gal./min 26.4 US gal./min
Dead weight standard crane	11520 kg	25400 lbs



Applications shown in the leaflet do not always correspond to the standard specifications. Design and specification are subject to change without prior notice. Country-specific regulations must be considered for the crane installation.