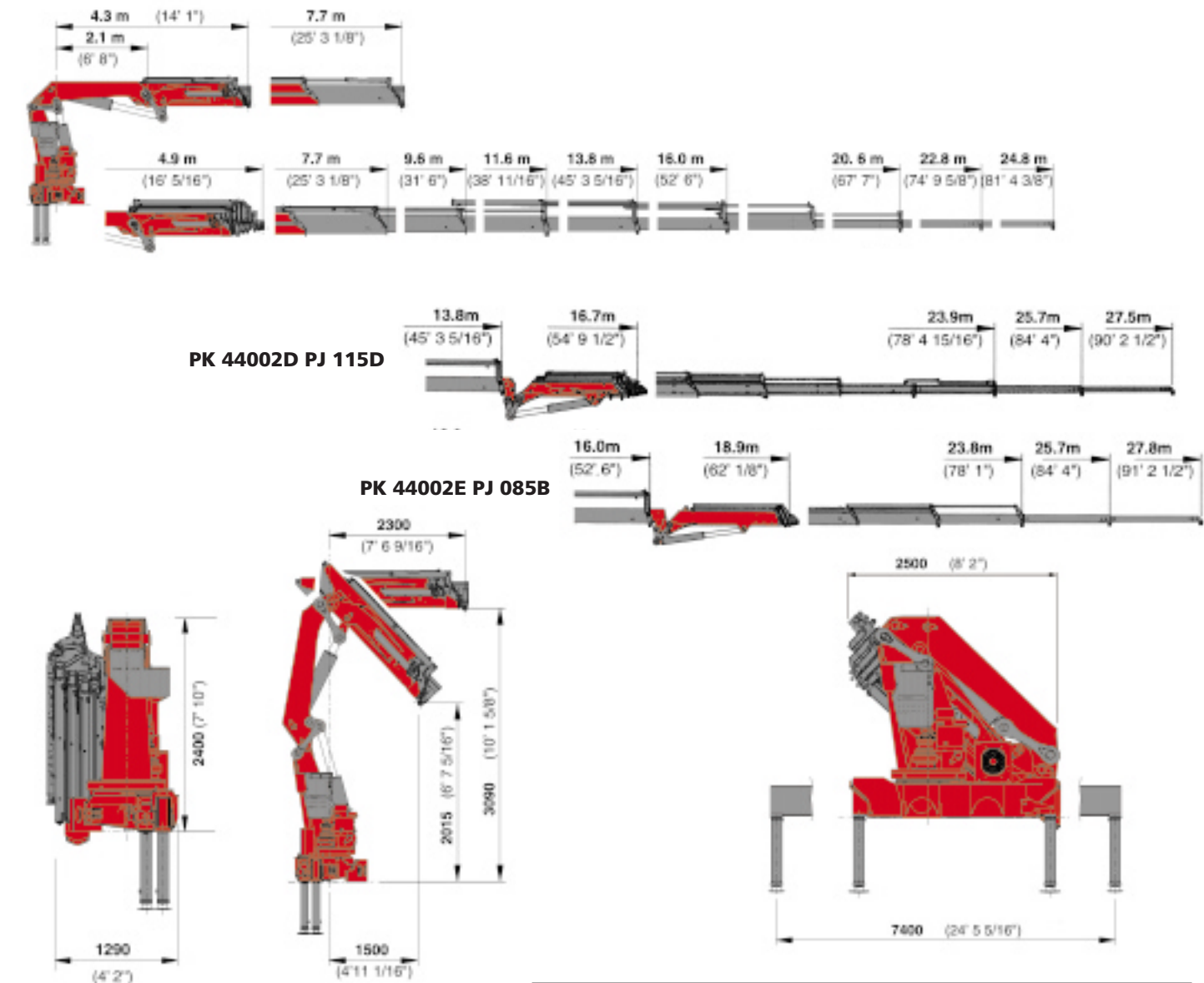


WELL SUPPORTED BY MORE THAN 1400 PALFINGER CONTRACT PARTNERS WORLDWIDE

PK 44002

Performance



PK 44002 Performance		
Standard crane		
Slewing torque	4.5 mt/44.1 kNm	32510 ft.lbs
Stabilizer spread	7.4 m	24' 3"
Fitting space required	1.29 m	4' 3"
Width folded	2.5 m	8' 3"
Operating pressure	330 bar	4785 psi
Recommended pump capacity	from 80 l/min. 17.6 imp.gal./min. 21.1 US gal./min to 100 l/min. 22.0 imp.gal./min. 26.4 US gal./min	
Dead weight (without mounting parts, pump and oil)	4095 kg	9030 lbs

PK 44002 Performance		
Technical specifications (DIN 15018 H1-B3)		
Max. lifting moment	42.5 mt/416.9 kNm	307380 ft.lbs
Max. lifting capacity	14500 kg/142.2 kN	31970 lbs
Max. hydraulic outreach	20.6 m	67' 7"
Maximum outreach	27.8 m	91' 2"
Slewing angle	endless	

Shown in the leaflet are not always corresponding to standard.
Country-specific regulations are to be observed upon attachment.



THE PERFECT ENTRY INTO THE HEAVY DUTY CLASS



THE PK 44002 *PERFORMANCE* STANDS OUT BY _____

VIRTUE OF ITS EXCELLENT MOVEMENT GEOMETRY

The PK 44002 *Performance* is a multifunctional heavy-duty crane. Whether handling containers, moving heavy machinery, recovering vehicles or performing assembly work with its large outreach – this crane masters every type of duty efficiently and cost-effectively.



HIGH PERFORMANCE CAPABILITY THANKS TO ITS EXTENSIVE STANDARD EQUIPMENT

IDEAL MATCHING TO ANY JOB WITH ADDITIONAL HINGED ARMS AND UP TO 8 HYDRAULIC EXTENSIONS

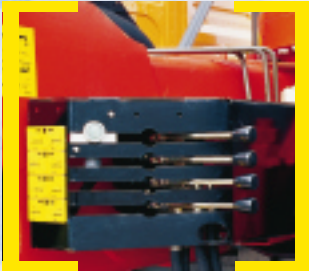
Endless slewing mechanism

The standard endless slewing mechanism provides an unrestricted action radius. As a result the crane operates much more quickly and cost-efficiently.



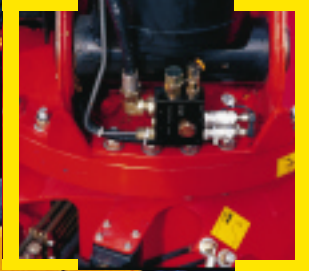
Outriggers

The standard 7.4 m telescopic outriggers ensure optimal stability. On request they can be supplied with support cylinders that swivel up hydraulically through 180°. The control valves for the crane and additional outrigger support are mounted as standard onto the base frame. The switchover between crane and support control takes place electrically



Load-holding valves

They prevent the crane arm from dropping and are fitted as standard onto the slewing mechanism, elevating arm, and extension cylinders. The valves are positioned in such a way that they are protected from being damaged.



AOS

The Active Oscillation Suppression system, which is available exclusively from PALFINGER, compensates for jolts and sharp stress cycles caused by crane operation. Because oscillations are eradicated, the crane can work with pin-point accuracy, much more quickly and therefore more cost-efficiently.

Advanced Package

- Oil cooler mounted
- Electronic HPLS
- Capacity display on control console
- PALFINGER radio control
- PALTRONIC 50
- Functional Design



Hose equipment for accessories

With this option you can provide the oil supply to accessories. The hoses are routed in compact troughs and plastic link chains. They are therefore optimally protected.

Return oil utilisation

The high speed of the extension system is impressive. It results from return oil utilisation, which is installed as standard, and the generously dimensioned hydraulic lines. This makes for increased efficiency in any type of working!

Internally routed oil ducts

The internally routed oil ducts permit a compact design for the extension system and ensure perfect protection from damage.

Functional Design

- Covering for the control valve area
- Covering for the hoses behind the crane column
- Outrigger system with internally routed hydraulic hoses

Stretchable hinged arm

This hinged arm specially developed by PALFINGER can be angled upwards and exhibits outstanding movement geometry. Even in unfavourable site conditions heavy crane work can be carried out without any problems.

Control valve

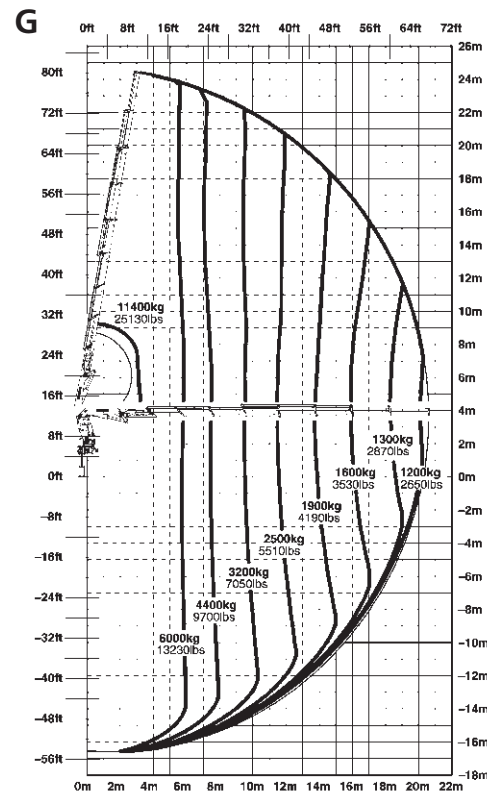
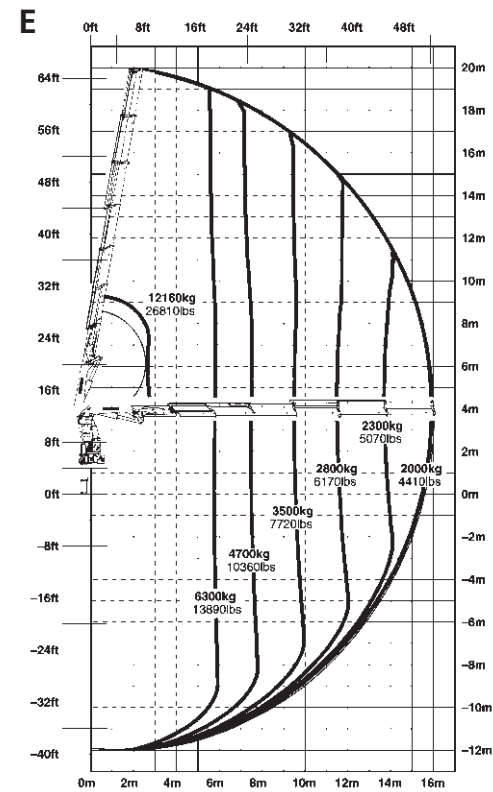
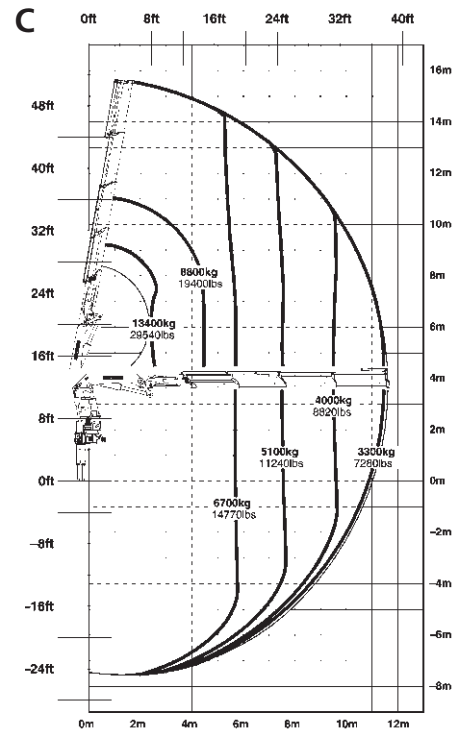
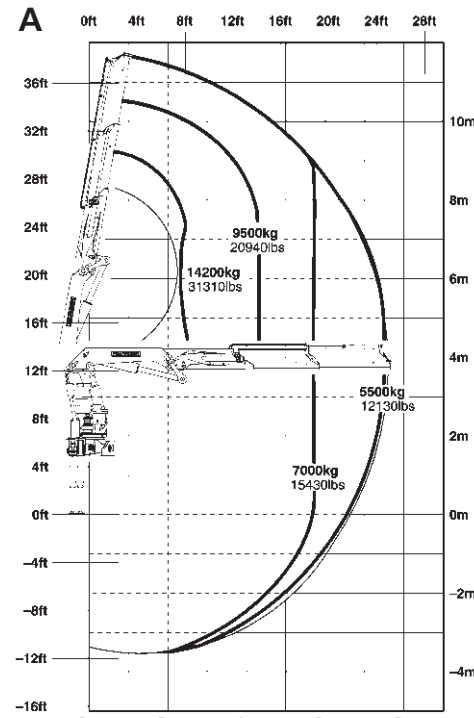
In combination with the PALFINGER radio control system the load sensing proportional valve enables the crane to be adjusted very sensitively.



OF EXTENDED EQUIPMENT AS STANDARD

PK 44002

Performance



Max. lifting capacities

PK 44002 Performance A			
hydraulic			
Outreach		Capacity	
2.2 m	14200 kg	7' 3"	31310 lb
4.5 m	9130 kg	14' 9"	20130 lb
5.7 m	7230 kg	18' 8"	15940 lb
7.5 m	5520 kg	24' 7"	12170 lb

PK 44002 Performance B			
hydraulic			
Outreach		Capacity	
2.2 m	13890 kg	7' 3"	30620 lbs
4.5 m	8920 kg	14' 9"	19660 lbs
5.7 m	7020 kg	18' 8"	15480 lbs
7.5 m	5300 kg	24' 7"	11680 lbs
9.5 m	4190 kg	31' 2"	9240 lbs

PK 44002 Performance C			
hydraulic			
Outreach		Capacity	
2.3 m	13400 kg	7' 7"	29540 lbs
4.5 m	8710 kg	14' 9"	19200 lbs
5.7 m	6800 kg	18' 8"	14990 lbs
7.5 m	5070 kg	24' 7"	11180 lbs
9.5 m	3950 kg	31' 2"	8710 lbs
11.5 m	3260 kg	37' 9"	7190 lbs

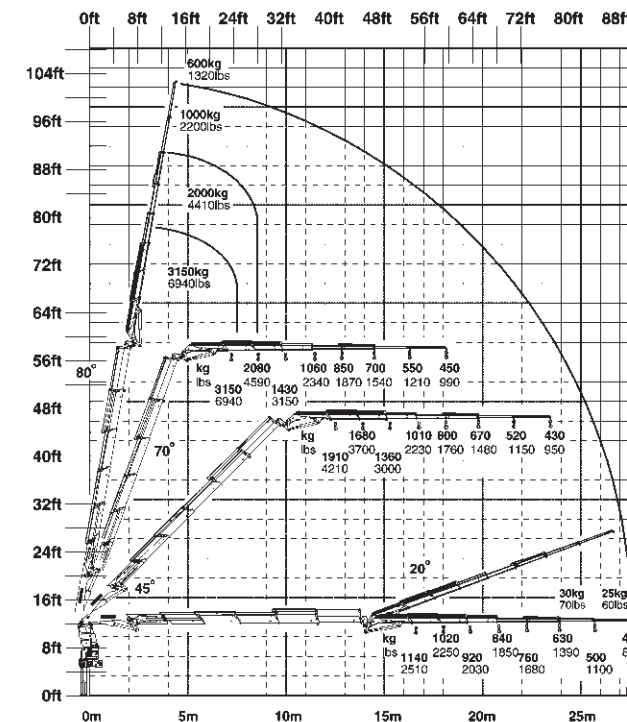
The reaches are indicated for a 20° main boom position and are therefore not the maximum ones.

PK 44002 Performance D				
hydraulic				
Outreach		Capacity		
2.4 m	12720 kg	7' 10"	28040 lb	
4.5 m	8560 kg	14' 9"	18870 lb	
5.7 m	6620 kg	18' 8"	14590 lb	
7.5 m	4880 kg	24' 7"	10760 lb	
9.5 m	3740 kg	31' 2"	8250 lb	
11.5 m	3030 kg	37' 9"	6680 lb	
13.7 m	2520 kg	44' 11"	5560 lb	

PK 44002 Performance E			
hydraulic			
Outreach		Capacity	
2.6 m	12160 kg	8' 6"	26810 lb
4.5 m	8400 kg	14' 9"	18520 lb
5.7 m	6450 kg	18' 8"	14220 lb
7.5 m	4680 kg	24' 7"	10320 lb
9.5 m	3530 kg	31' 2"	7780 lb
11.5 m	2810 kg	37' 9"	6190 lb
13.7 m	2300 kg	44' 11"	5070 lb
15.9 m	1960 kg	52' 2"	4320 lb
manual			
18.1 m	1650 kg	59' 5"	3640 lb
20.3 m	1250 kg	66' 7"	2760 lb

PK 44002 Performance G			
hydraulic			
Outreach		Capacity	
3.0 m	11400 kg	9' 10"	25130 lbs
4.5 m	8060 kg	14' 9"	17770 lbs
5.7 m	6150 kg	18' 8"	13560 lbs
7.5 m	4360 kg	24' 7"	9610 lbs
9.5 m	3180 kg	31' 2"	7010 lbs
11.5 m	2450 kg	37' 9"	5400 lbs
13.7 m	1920 kg	44' 11"	4230 lbs
15.9 m	1580 kg	52' 2"	3480 lbs
18.2 m	1330 kg	59' 9"	2930 lbs
20.5 m	1170 kg	67' 3"	2580 lbs
manual			
22.6 m	900 kg	74' 2"	1980 lbs
24.6 m	700 kg	80' 9"	1540 lbs

D PJ115D



E PJ085B

